

Photo report

Creation of the access road to a wind farm by using NovoCrete®

- Location: Seewald/Germany
- Area: 10,000 m²
- Period of execution: October 2006
- Time needed: 5 days
- Cement: 180 kg/m³ with 2 % NovoCrete®
- Milling depth: 35 cm

ibs GmbH

Neue Weinsteige 33

D-70180 Stuttgart, Germany

Phone: + 49 - (0) 711 - 220 29 290

Fax: + 49 - (0) 711 - 220 29 199

www.novocrete.com

info@novocrete.com

Creation of a wind farm with NovoCrete®



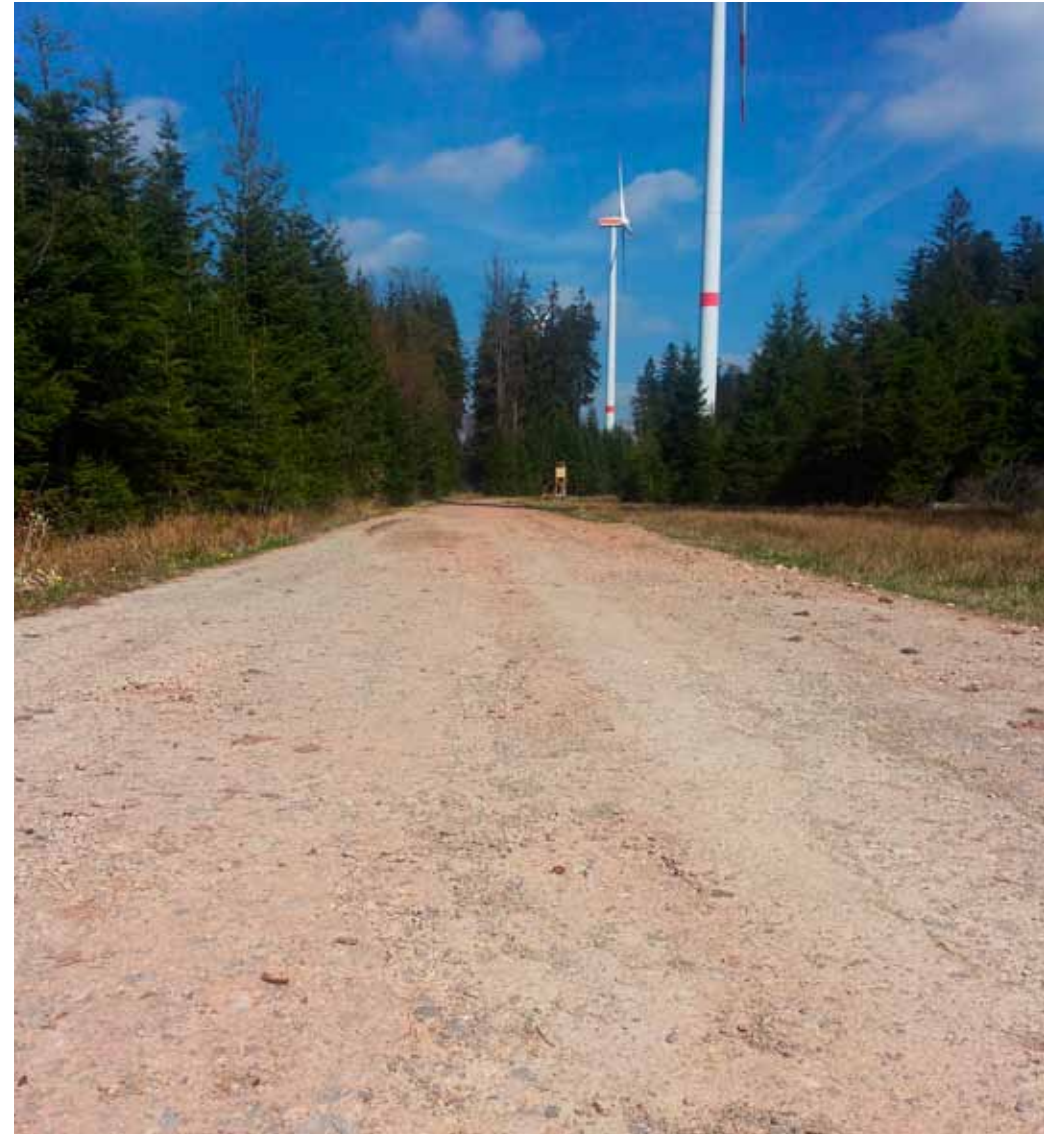
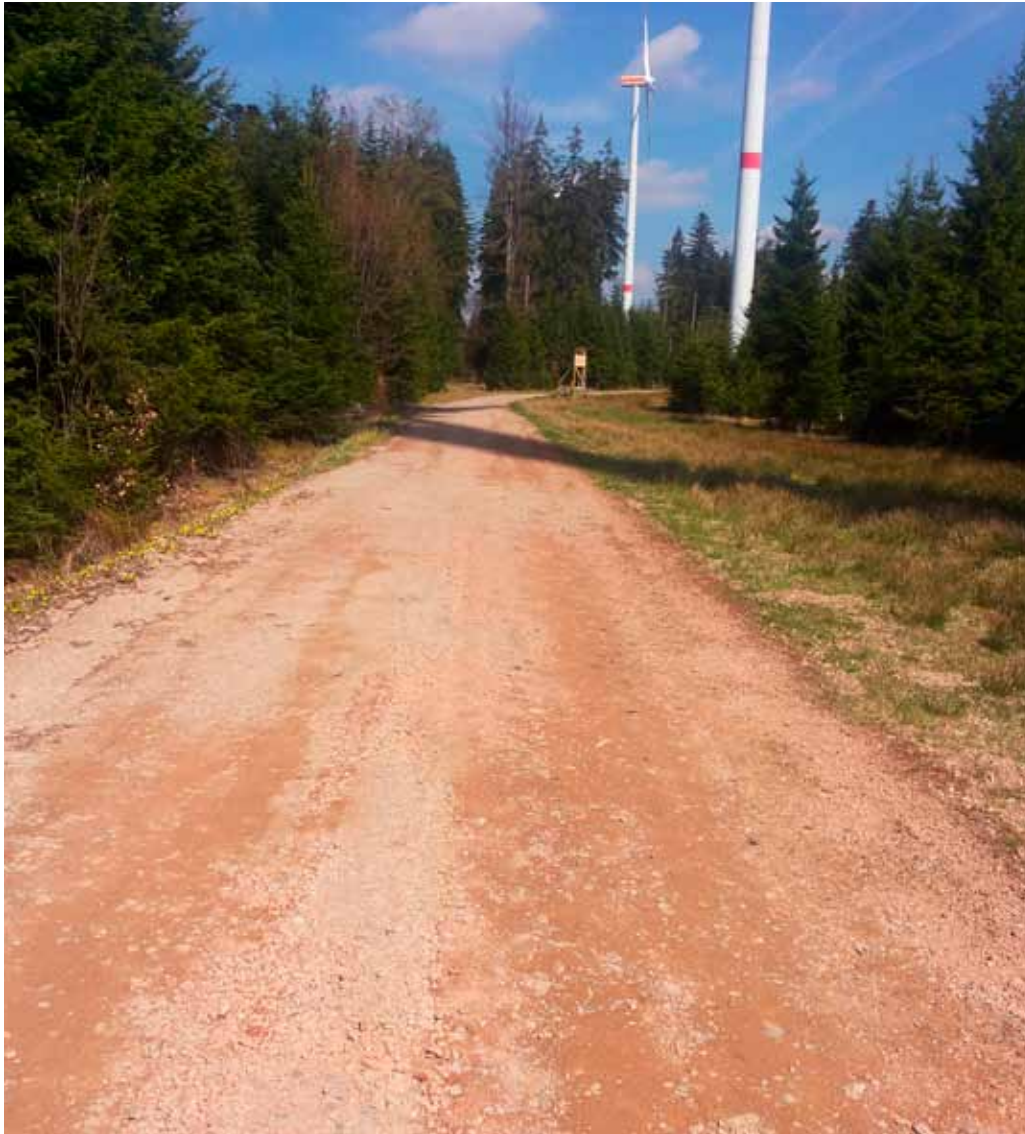
Photo report: Creation of a wind farm



Photo report: Creation of a wind farm



Photo report: Creation of a wind farm



Status after more than 7 years (with heavy truck traffic and several strong frost periods)

Photo report: Creation of a wind farm



Status after more than 7 years (with heavy truck traffic and several strong frost periods)